



PlusPRO 4 Series Rack/Tower

ON-LINE UPS

1000VA / 2000VA / 3000VA
(100/110/120/125Vac)

PlusPRO 4 Series



1000VA/900W



2000VA/1800W



3000VA/2700W

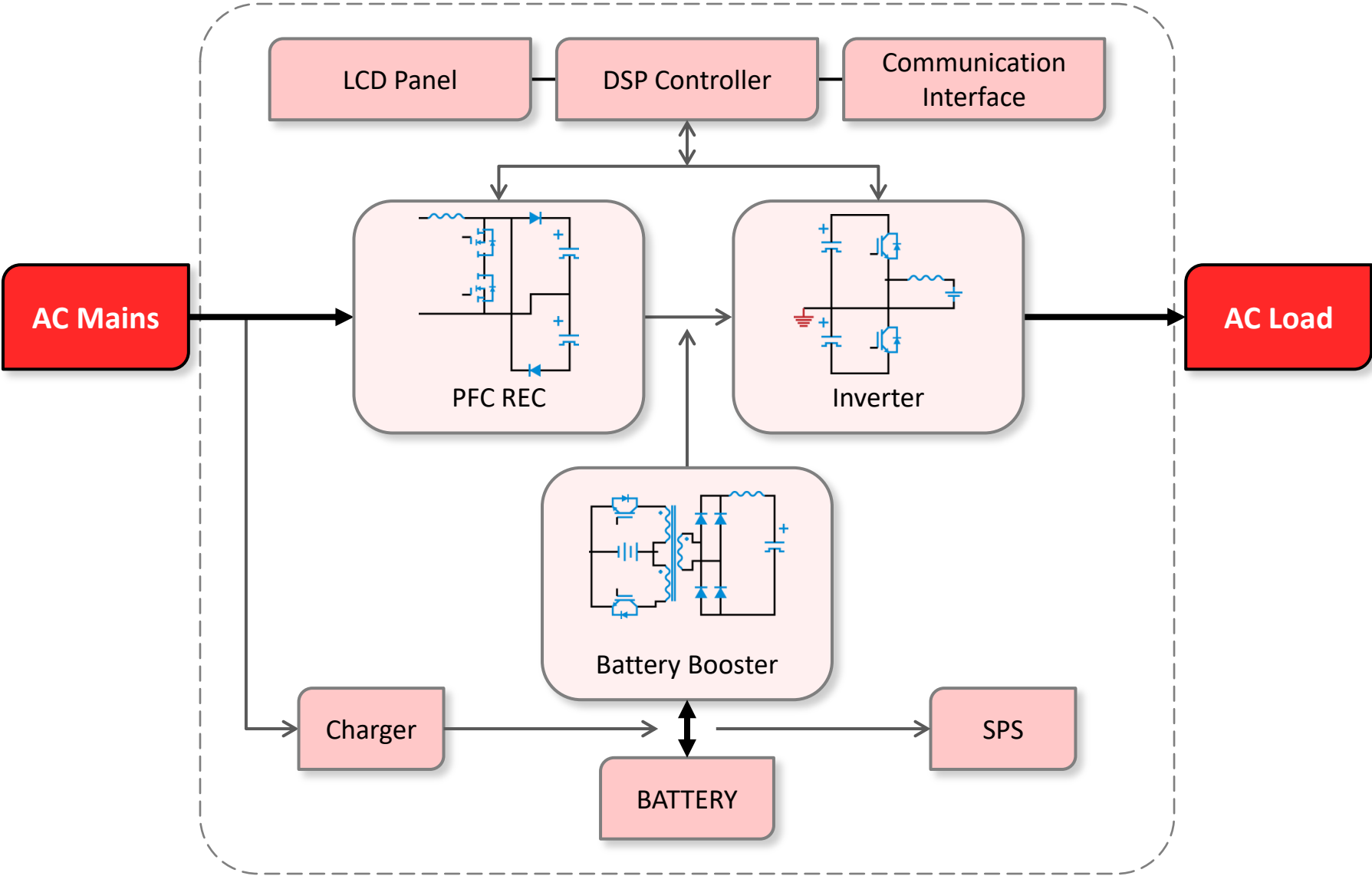
Product Introduction

PlusPRO 4 LV series 1000VA to 3000VA is a true double conversion online UPS with **pure sinewave** output and **zero transfer time** in a **rack and tower** convertible unit.

Featuring 1000VA, 2000VA, 3000VA configuration with wide input range **55VAC to 145VAC**, **output power factor 0.9**, **LCD display**, PlusPRO 4 series stand out as high efficient line of online UPS for mission critical equipment in data/computer center or industrial applications.

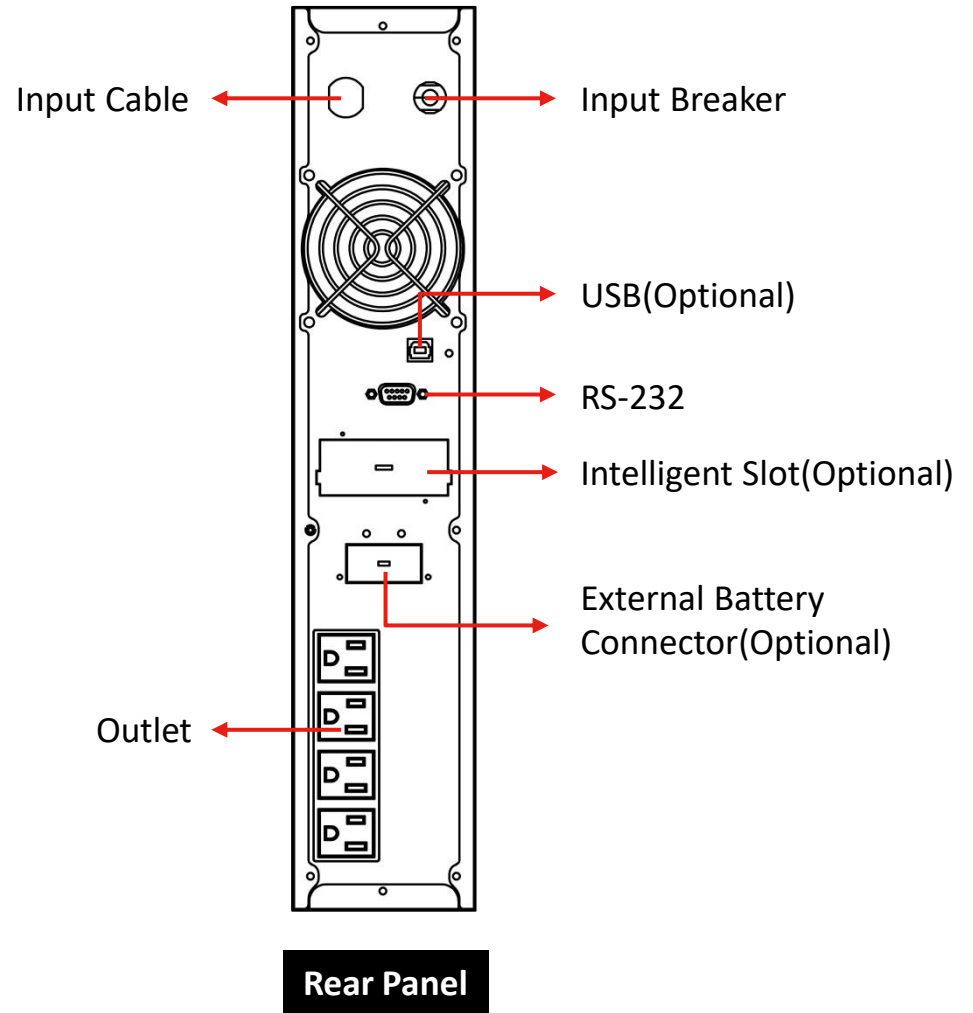


Basic Functional Module and Power Topology



Structural Diagram – PlusPRO 4-1000

1000VA/900W

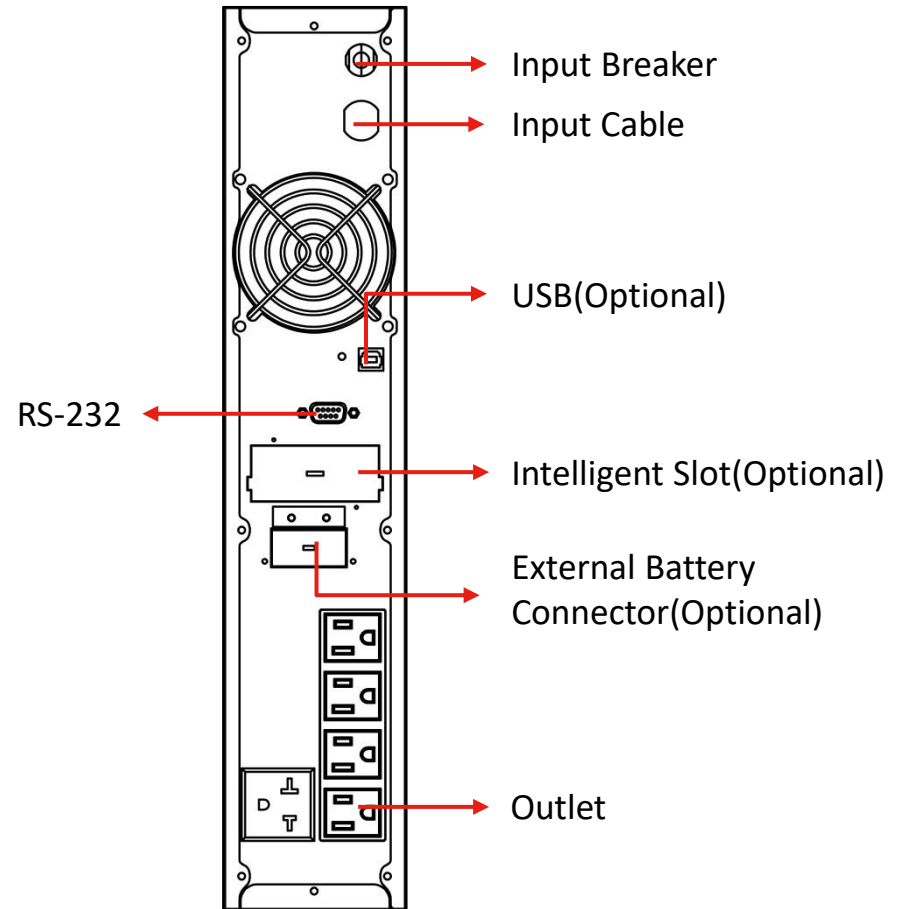


Structural Diagram – PlusPRO 4-2000

2000VA/1800W



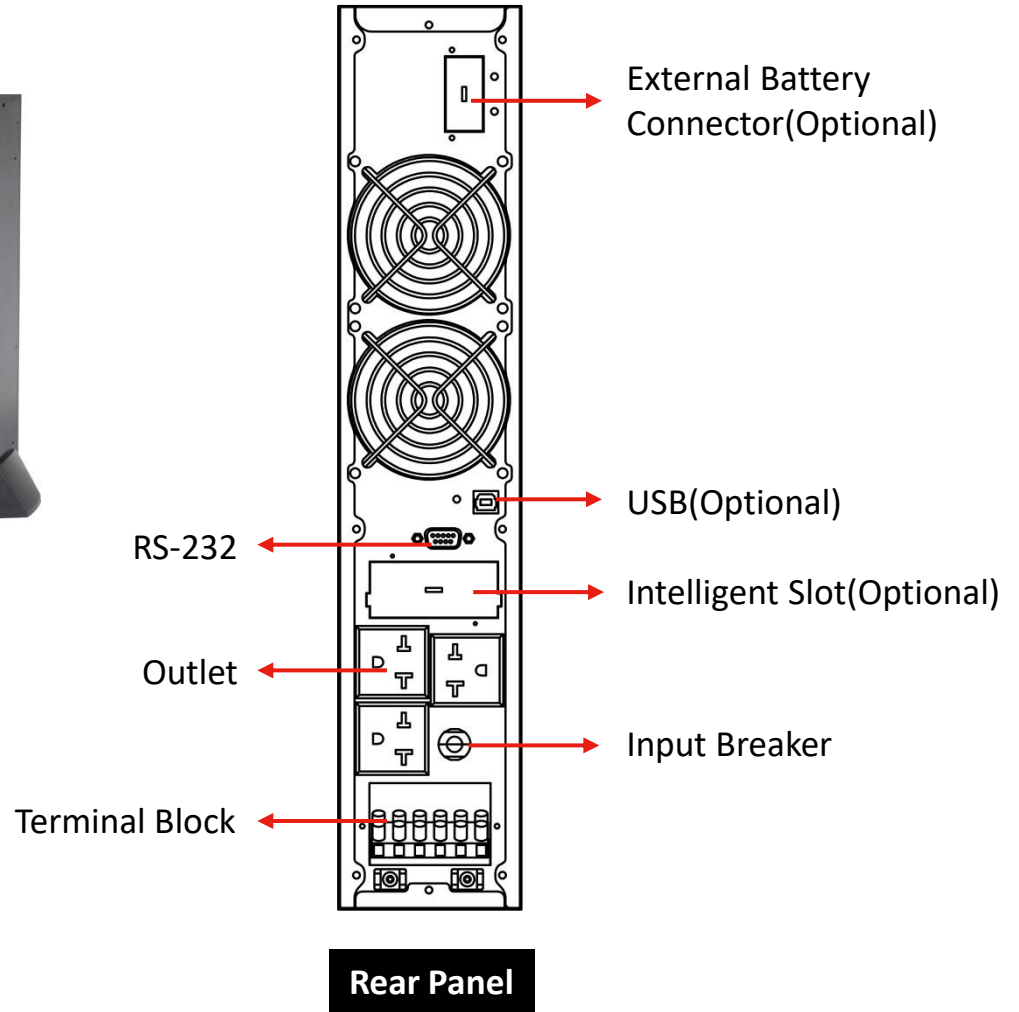
Front Panel



Rear Panel

Structural Diagram – PlusPRO 4-3000

3000VA/2700W



Accessories

Mounting Bracket



Handle



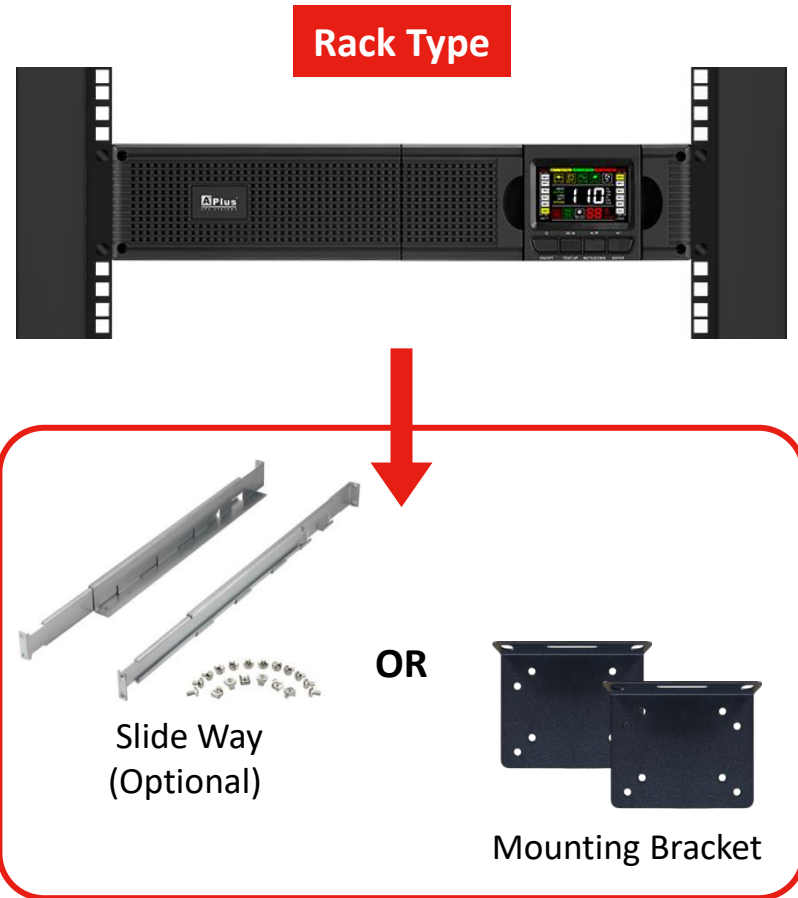
Slide Way (Optional)



Stabilizing Feet



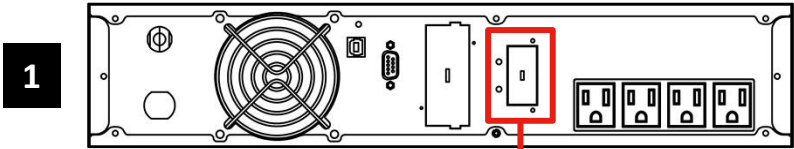
Tower/Rack Convertible



External Battery Bank

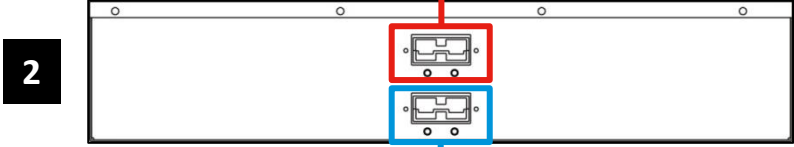


Main UPS Box



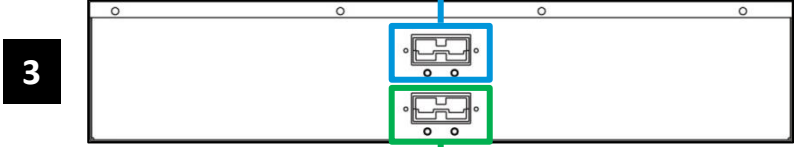
1

Battery Bank Box-1



2

Battery Bank Box-2



3

N

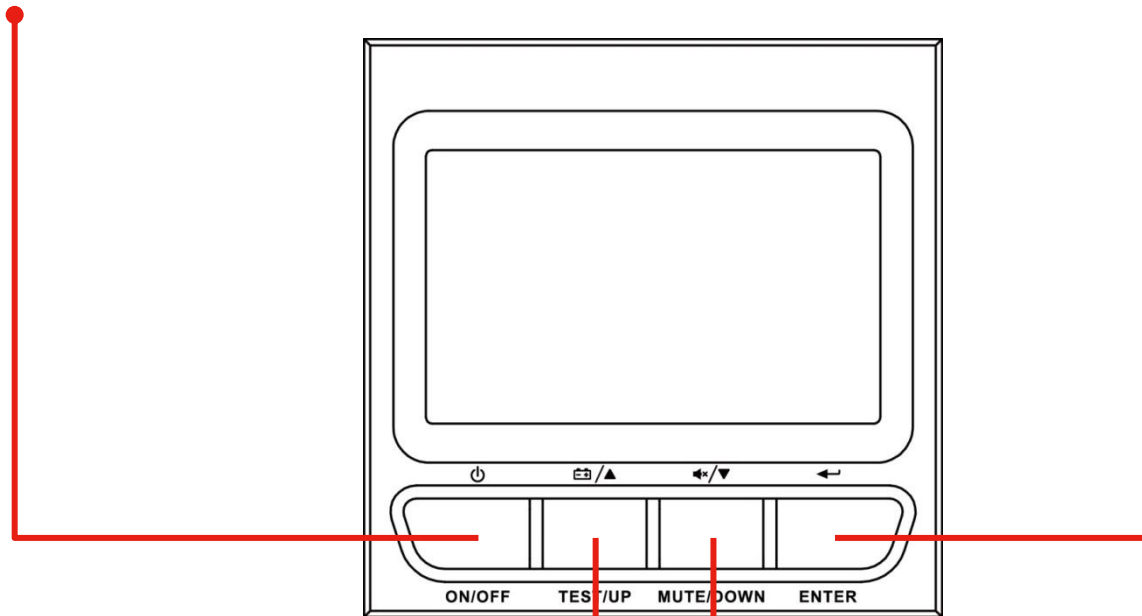
Button Information

ON/OFF-Button

By pressing this Button, the UPS system can be turned on or turned off.

ENTER-Button

Enter button is used to enter setting mode and confirm change of the setting.



TEST/UP-Button

The Up Page Button is used to switch the display the LCD display information, and activate the battery self-test function.

MUTE/DOWN-Button

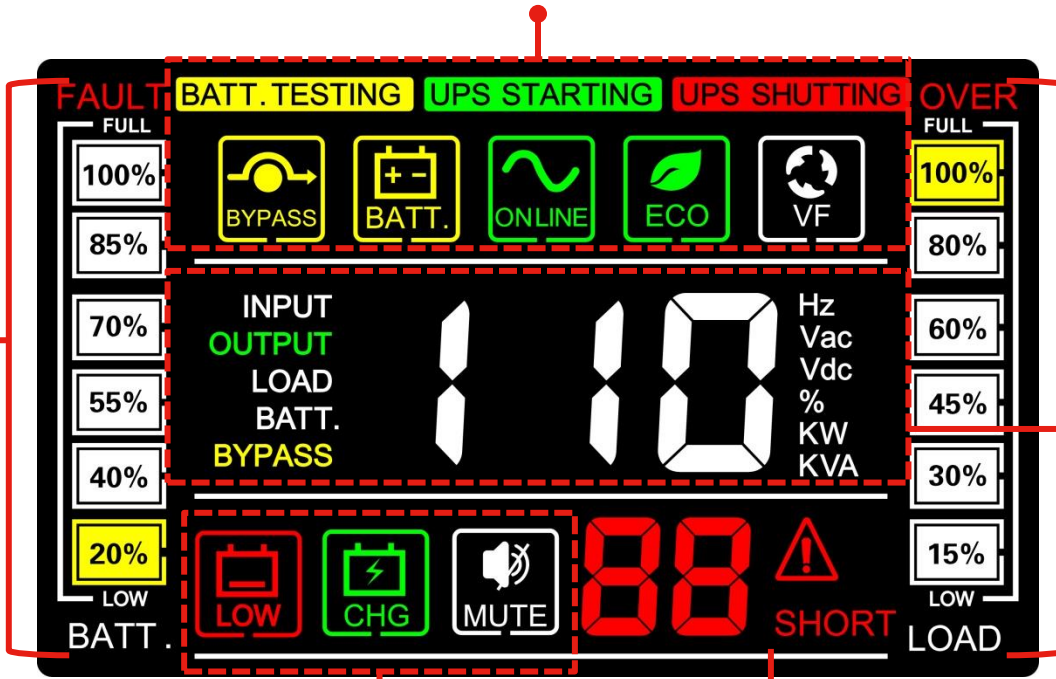
The Down Page Button can also be used to switch the display the LCD display information, and muted/recover the buzzer alarm function.

LCD with Color Display

Battery Information

Mode Operation Information

Load Information



Mode Operation Information

Fault Information

Input/Output Information

Features



Comprehensive LCD display shows detailed information of UPS status



High performance true double conversion On Line UPS 1-3KVA



Microprocessor control guarantees high reliability



High efficiency mode (ECO mode)



High efficiency mode (Line mode)



Rack/tower convertible design



Emergency Battery Back-up



Output power factor 0.9



19-inch rack mount case



Pure Sine wave Output



Modular design

Specifications -1

| MODEL | | PlusPRO 4-1000 | PlusPRO 4-2000 | PlusPRO 4-3000 |
|-------------------|--------------------------|---|------------------------------|------------------------------|
| CAPACITY | | 1KVA/0.9KW | 2KVA/1.8KW | 3KVA/2.7KW |
| INPUT | Voltage | 110/115/120/125VAC, Default 120VAC | | |
| | Voltage Range | 55Vac-145Vac | | |
| | Frequency | 40-70Hz | | |
| | Input Wiring | Single Phase with Ground | | |
| OUTPUT | Output Power Factor | 0.9 | | |
| | Nominal Output Voltage | 110/115/120/125VAC, Default 120VAC | | |
| | Voltage Regulation | +/-1% | | |
| | Frequency Range | 50/60Hz +/-0.05Hz(Battery Mode) | | |
| | Overload | 100%-105% continuous. 60Sec. @105%-130% Rated Load | | |
| | Voltage Distortion(THDv) | <2% @linear load | | |
| | Output Waveform | Pure Sine Wave | | |
| | Parallel Operation | N/A | | |
| EFFICIENCY | Inverter Mode | 88% | 89% | 90% |
| BATTERY | Battery Type | VRLA | | |
| | Battery | 12V/7AH*2 or 12V/9AH*2 | 12V/7AH*4 or 12V/9AH*4 | 12V/7AH*6 or 12V/9AH*6 |
| | Rated Battery Voltage | 24VDC | 48VDC | 72VDC |

*Product specifications are subject to change without further notice.

Specifications -2

| MODEL | | PlusPRO 4-1000 | PlusPRO 4-2000 | PlusPRO 4-3000 |
|----------------------|-----------------------|--|----------------|----------------|
| BATTERY | Charging Current | 1A | | |
| | Recharging time(90%) | 5 hours | | |
| TRANSFER TIME | Battery <--> Inverter | 0ms | | |
| | Inverter <--> Bypass | <4ms | | |
| | ECO <--> Battery | <10ms | | |
| DISPLAY | | Segment LCD | | |
| AUDIBLE ALARM | | Yes | | |
| PHYSICAL | Format | Tower/Rack: 2U | | |
| | Dimension(D*W*H)(mm) | 355*440*88(2U) | 503*440*88(2U) | 568*440*88(2U) |
| ENVIRONMENT | Operating Temperature | 0-40°C | | |
| | Regulation | cTUVus, FCC | | |
| | Noise Level | <55dB | | |
| INTERFACE | RS-232 | Yes | | |
| | USB | Optional | | |
| | Intelligent Slot | Optional (Pptional NMC Card/CMC Modbus Card/AS400 Card) | | |

*Product specifications are subject to change without further notice.



APLUS POWER CORP.

Aplus, Reliable Power Brand Deserve Your Trust